

P

Paulmann

Safety Instructions



0,1,2,3,4,8,7,9,11,
15,18,22,25,26,27



Help Hotline

+49 (0) 5042 998 889

Mon. - Fr. 7^h - 20^h

Sa. 10^h - 12^h

Paulmann Licht GmbH
30832 Springs / Germany
www.paulmann.com

Art.-Nr.:
482.00

12884 1/10
PMA 10/12



Incl. 

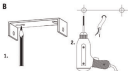


A



Safety Instructions
Nr. 0,1,2

B



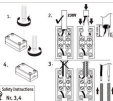
Safety Instructions
Nr. 0,1,2

C



Safety Instructions
Nr. 4

D



Safety Instructions
Nr. 3,4

E



Safety Instructions
Nr. 4

A, B, C, D, E

