



### Safety Instructions



0,1,2,4,6,7,8,9,11,15,  
20,22,26,27



Info Hotline **+49 (0) 5041 998 389**

Mon. - Do. 7<sup>00</sup> - 20<sup>00</sup>

Fr. 7<sup>00</sup> - 17<sup>00</sup>



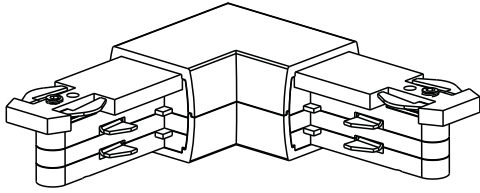
**Paulmann Licht GmbH**  
Quezinger Feld 2  
31832 Springe / Germany

Art.-Nr.:

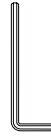
**951.42**

(+MA 173)

PH 04/13 

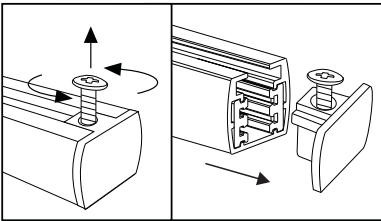
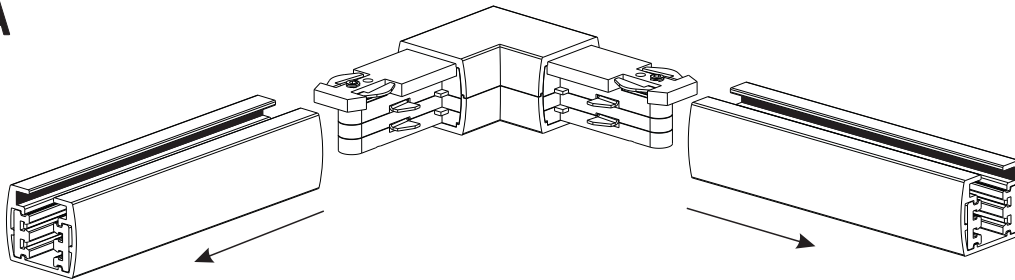


1x

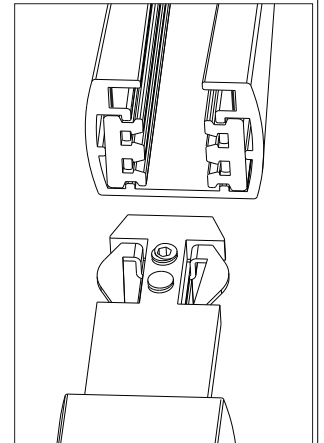


1x

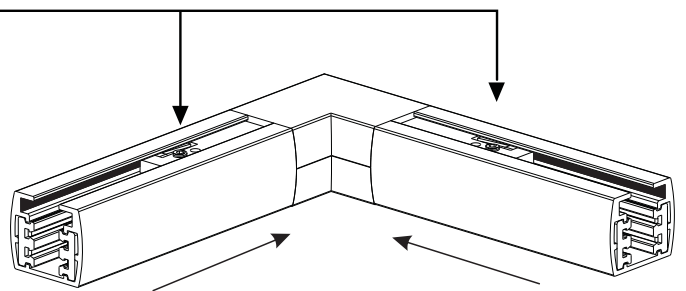
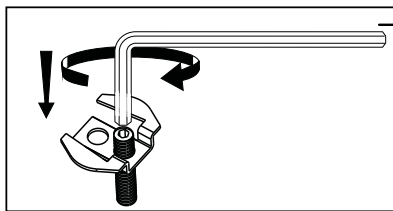
**A**



 **Safety Instructions**  
**Nr.0,1,2,4**



**B**



 **Safety Instructions**  
**Nr.0,1,2,4**

