

Safety Instructions



0, 1, 2, 4, 5b, 6, 7, 8, 9,
11, 12, 15, 16, 17, 19,
20, 21, 22, 23, ...

Info Hotline 

+49 (0) 5041 998 389

Mon. - Do. 7⁰⁰ - 20⁰⁰

Fr. 7⁰⁰ - 17⁰⁰



Paulmann Licht GmbH
31832 Springe / Germany
www.paulmann.com

Art.-Nr.:

98431

98441

98461

98420

98429

(+MA 173)
PXY MM/YY

98431
98441
98461



1X



1X



incl.

98420
98429



3X



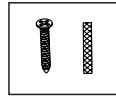
3X



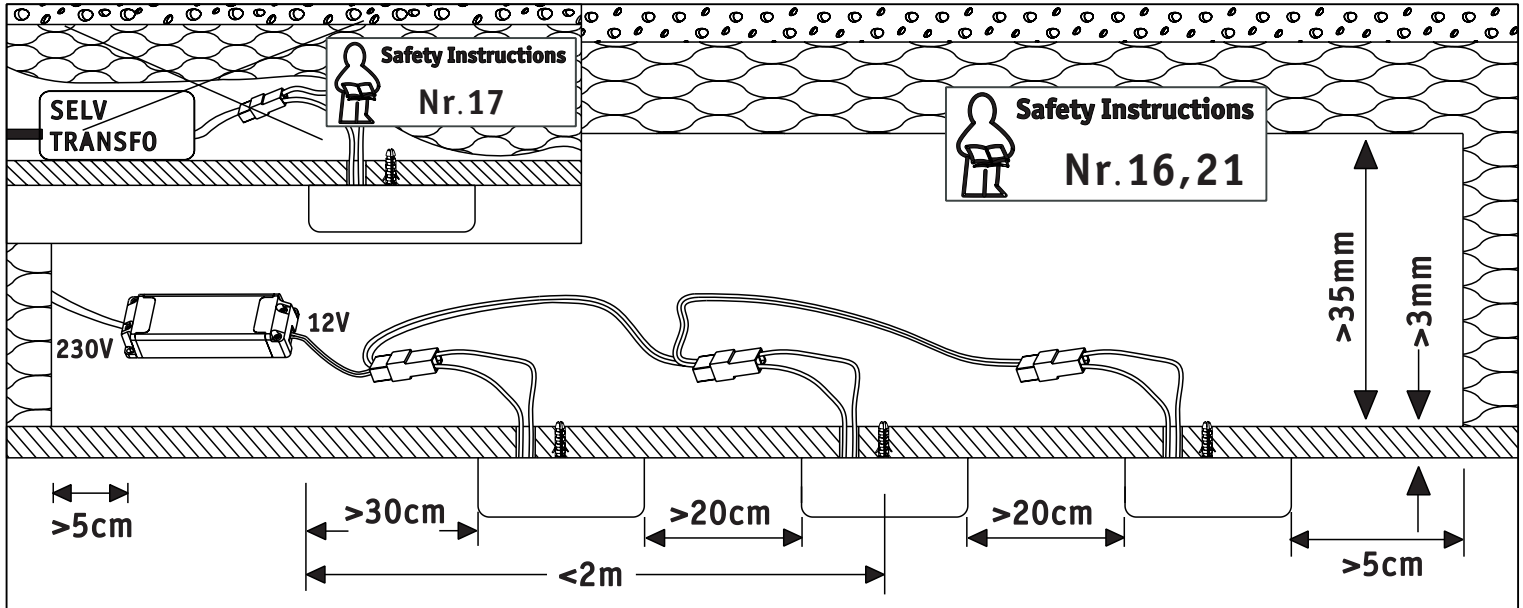
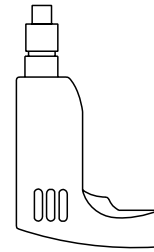
3X



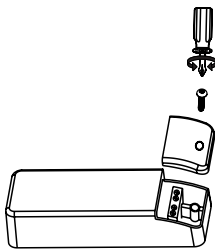
1X



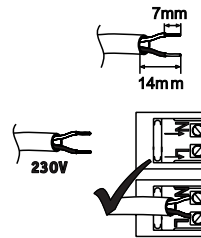
incl.



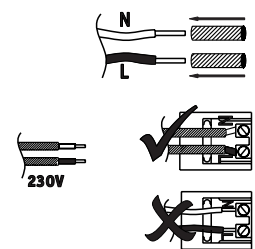
A



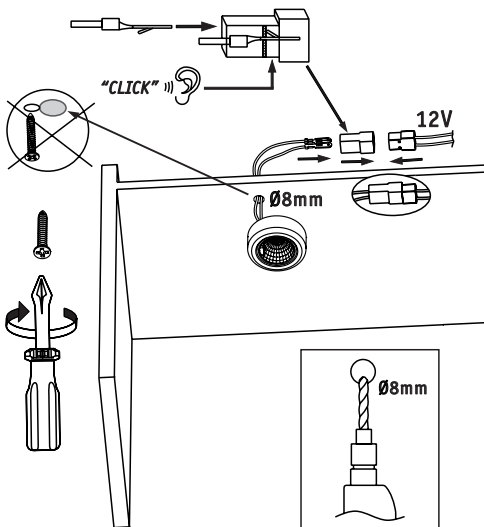
1



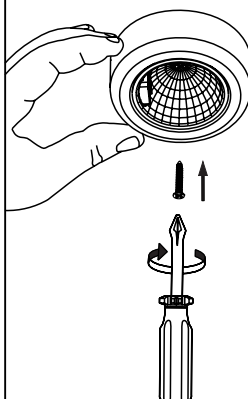
2



B



C



D

